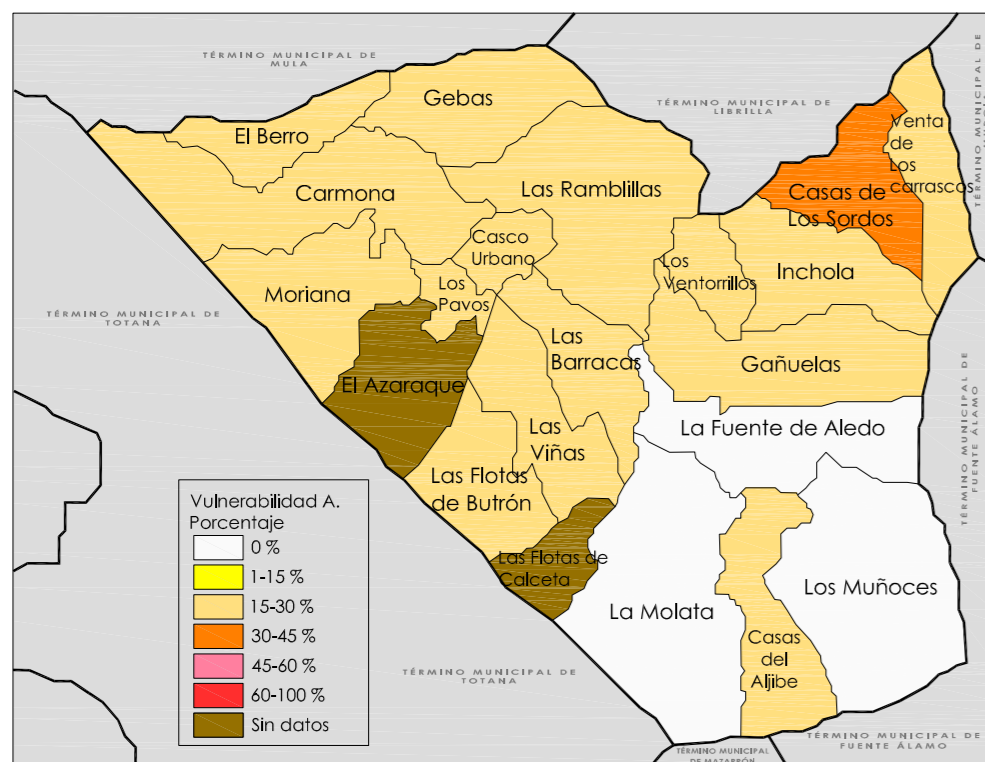
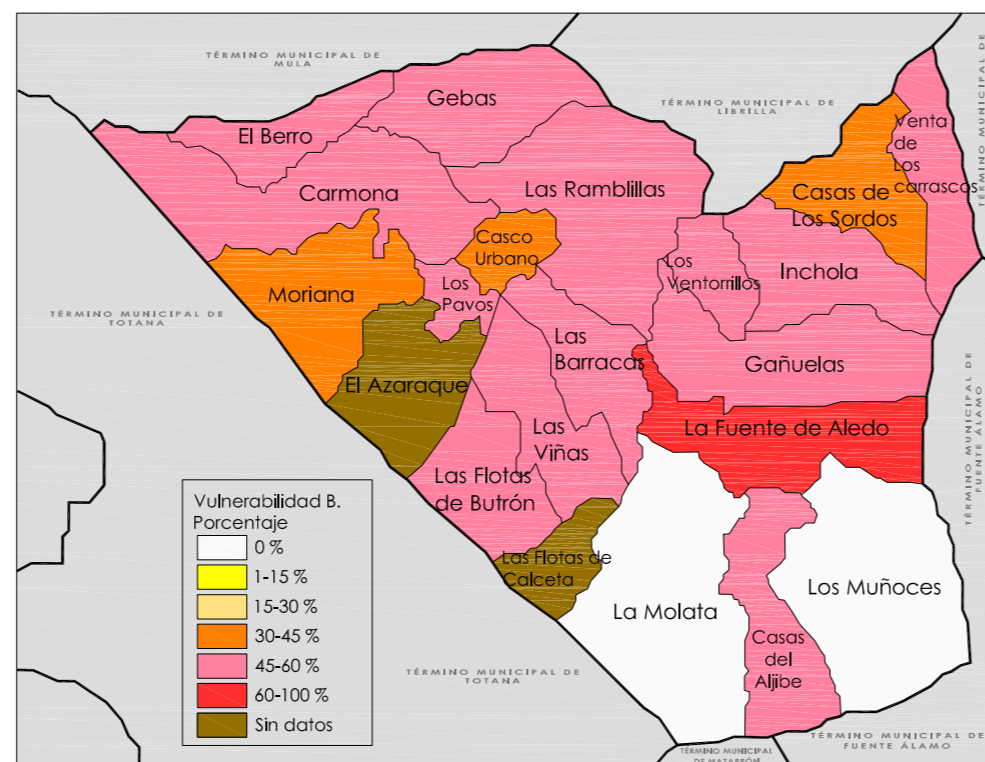




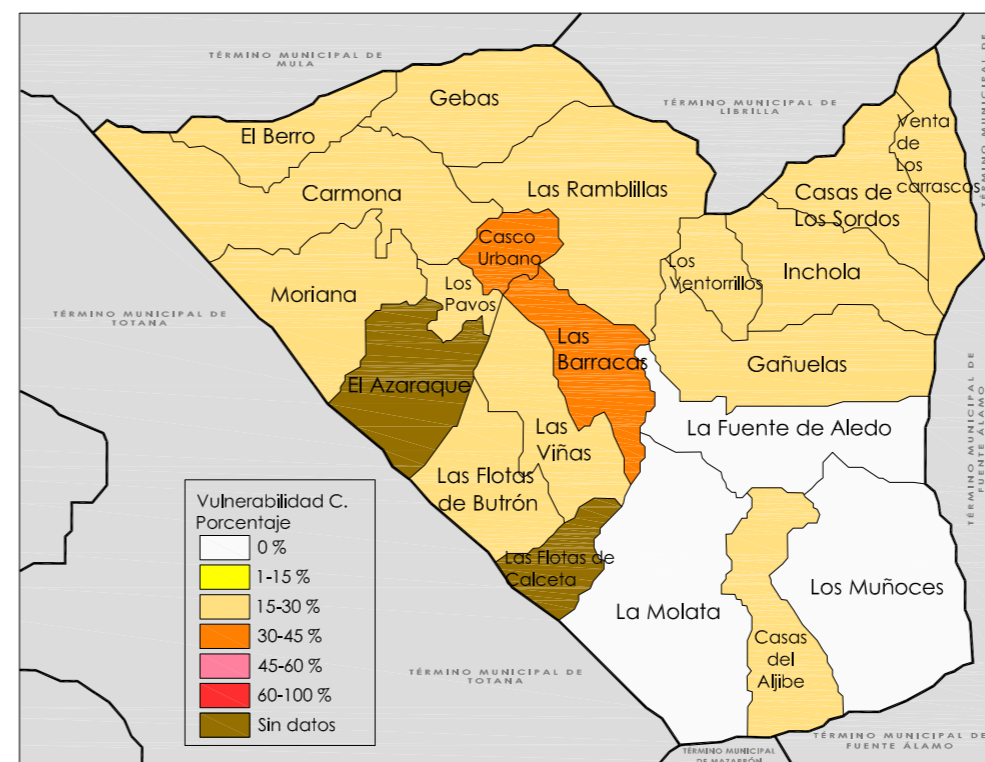
VULNERABILIDAD A



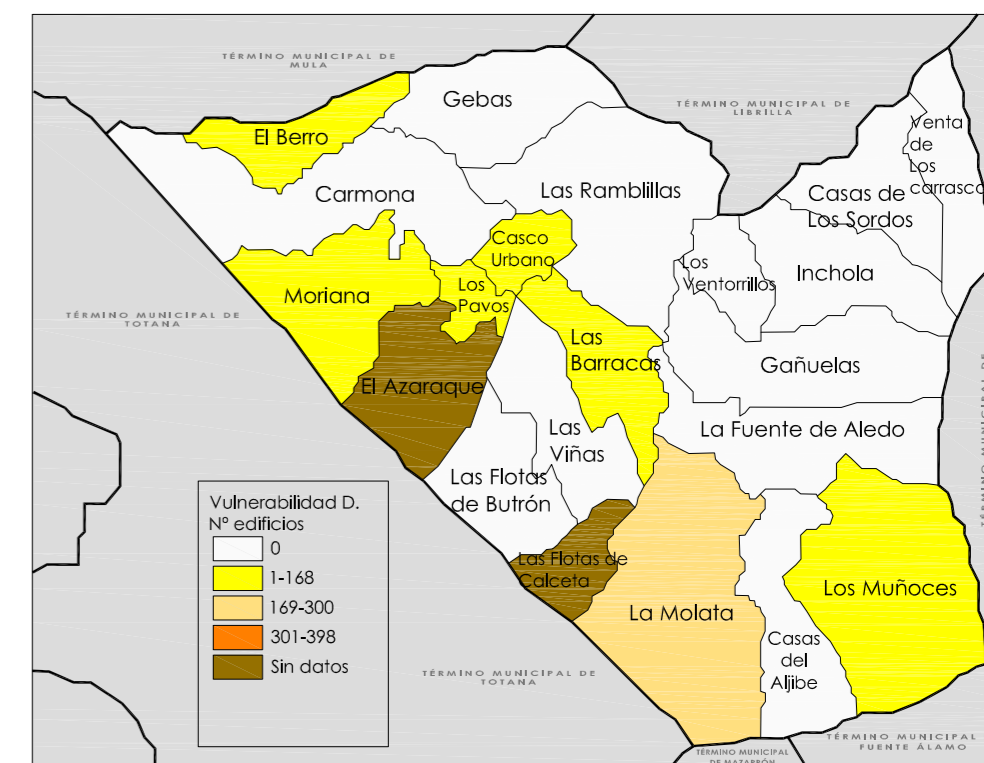
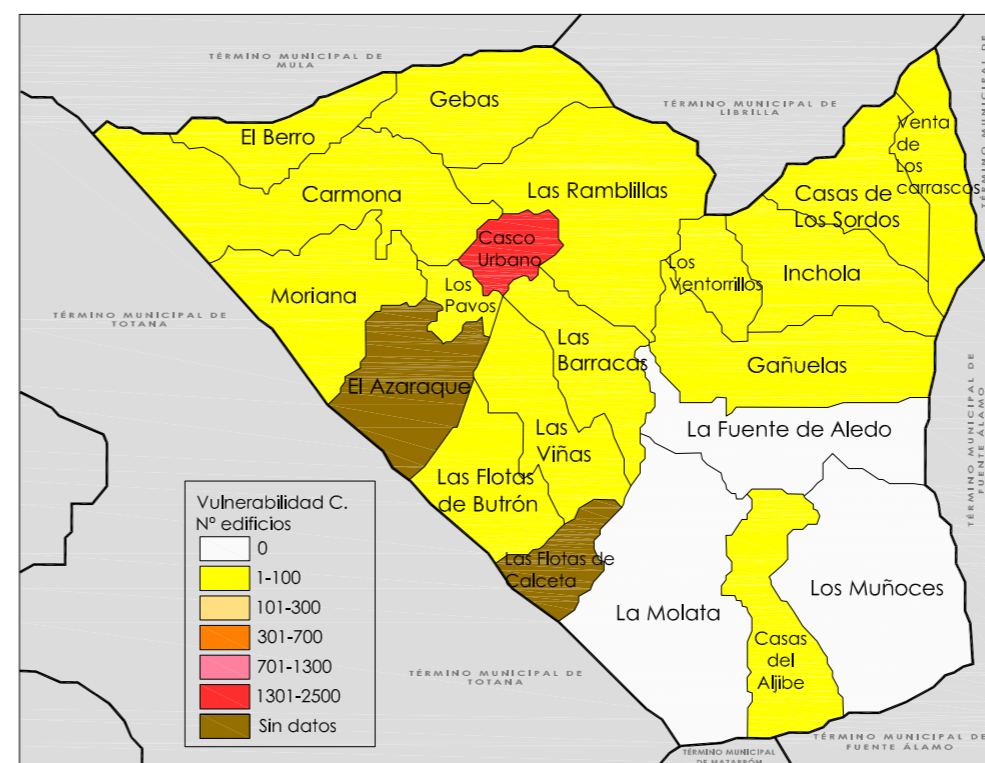
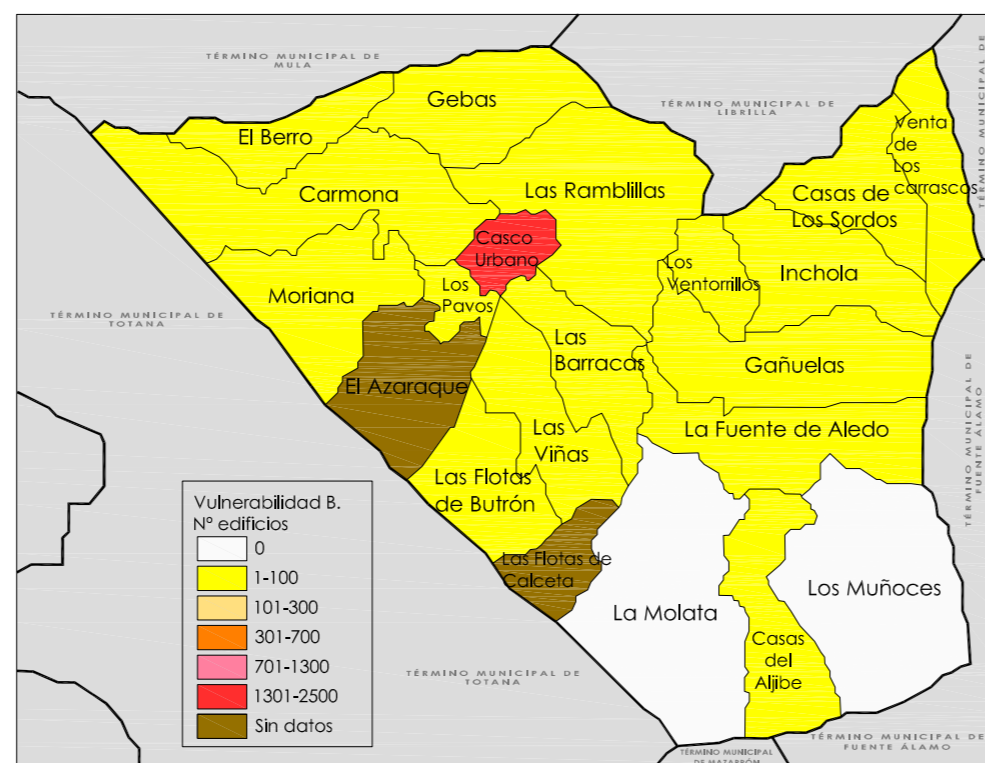
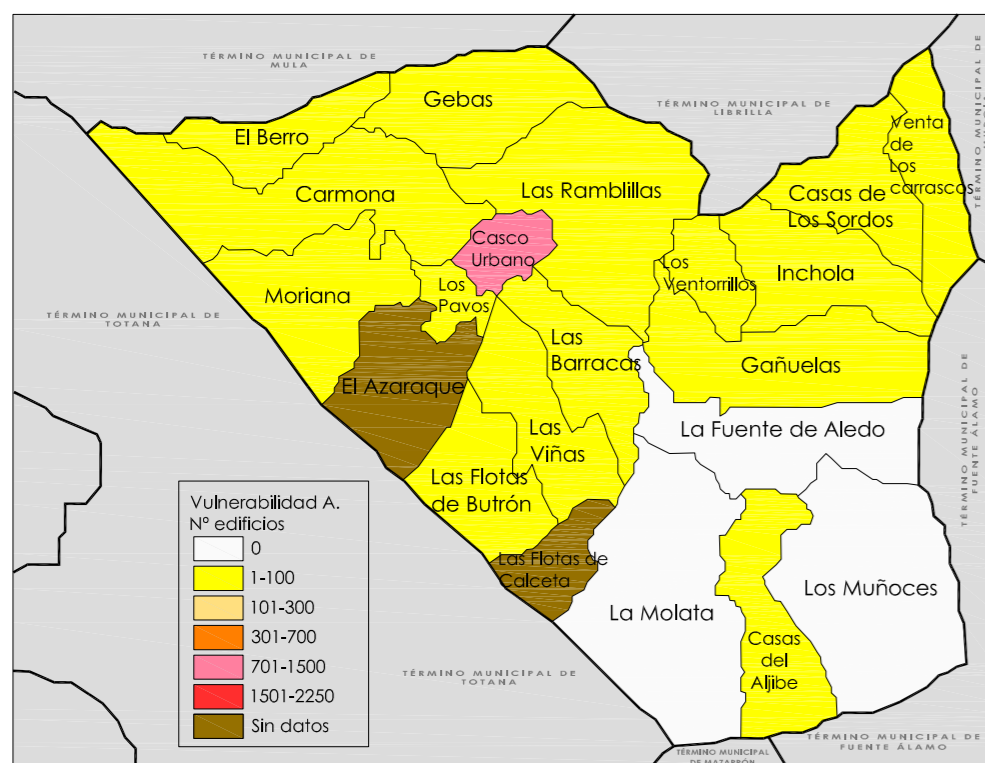
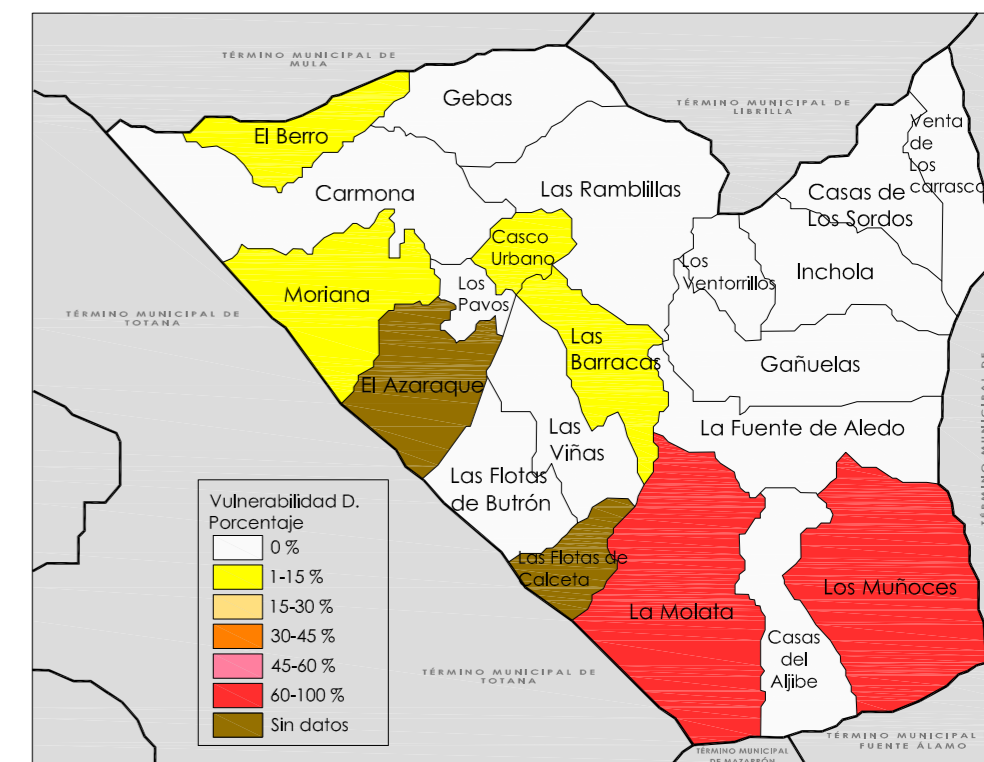
VULNERABILIDAD B



VULNERABILIDAD C



VULNERABILIDAD D



PLAN DE EMERGENCIAS MUNICIPAL

PLANO:

ANÁLISIS DE RIESGOS NATURALES. RIESGOS GEOLÓGICOS. SISMO. VULNERABILIDAD DE LAS EDIFICACIONES EXISTENTES EN EL T.M.

FECHA:

Marzo 2014

FECHA REVISIÓN:

ESCALA:

1:220.000

NUMERO:

12

02b

